



Logan County Service Coordination

Supporting families and children through a family centered planning process

Family Voice and Choice

Team Based

Natural Supports

Collaboration

Community Based

Culturally Competent

Individualized

Strengths Based

Persistence

Outcome Based

Annual Report

State Fiscal Year 2010



Logan County Family & Children First Council

Child & family serving organizations working together to develop and coordinate services and resources for children, youth, and their families

1973 St. Rt. 47 W.

PO Box 710

Bellefontaine, OH 43311

937-592-7287

www.logancountyfcfc.com

E-mail: ahaver@logancbdd.org

Overview of Service Coordination

Service coordination is a way of organizing services for families and children. It finds agencies, people and services that can help children and families. Then, with the family’s involvement, it creates a plan to get the child and family what they need.

Any Logan County family with a child under the age of 21 in need of a coordinated plan to address needs in 2 or more areas of life, that are unable to be met by an individual agency may be eligible for service coordination.

Activities of Service Coordination:

- The coordination of evaluations and assessments
- The development & evaluation of a Comprehensive Wraparound Plan
- The identification of available service providers
- The coordination and monitoring of service delivery
- Referral to advocacy services
- The development of a transition plan when service coordination ends

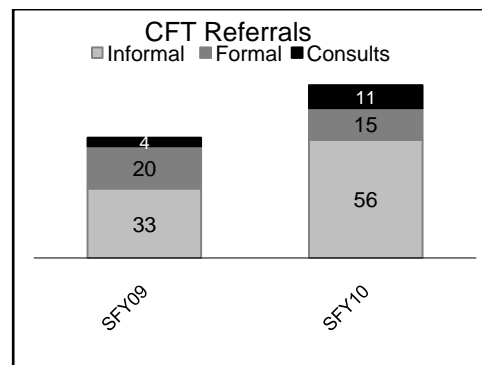
Referrals

Service Coordination referrals are approved or denied by a Triage committee that meets weekly. Triage is made up of staff from various community agencies. Children are eligible for Service Coordination if they have multiple needs. Once eligibility is determined, Triage works with the FCFC Program Coordinator to decide what level of service coordination is indicated for the child.

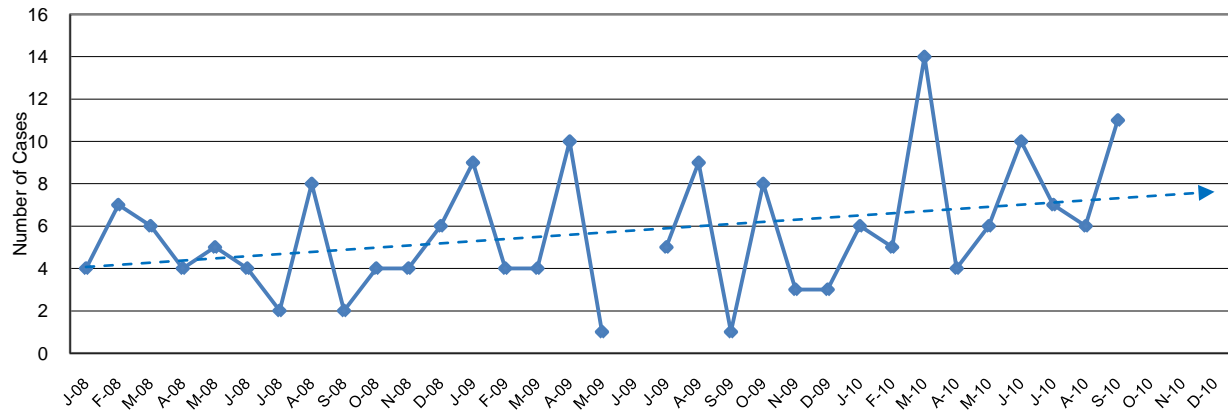
There are two levels of care, Informal Child and Family Teams and Formal Child and Family Teams. Informal Child and Family teams are facilitated by a provider already working with the family and Formal teams are facilitated by the FCFC Program Coordinator.

Within two weeks of an approved formal referral, the FCFC Program Coordinator makes initial contact with the family to explain the team process, complete necessary paperwork and help the family determine if Wraparound is appropriate. The numbers below include those families that met with the Program Coordinator and chose to participate in Wraparound.

	SFY08	SFY09	SFY10
Referrals Received	41	57	74
Outcomes:			
Consultation	0	4	11
Informal Child & Family Team	28	33	56
Formal Child & Family Team	13	20	15



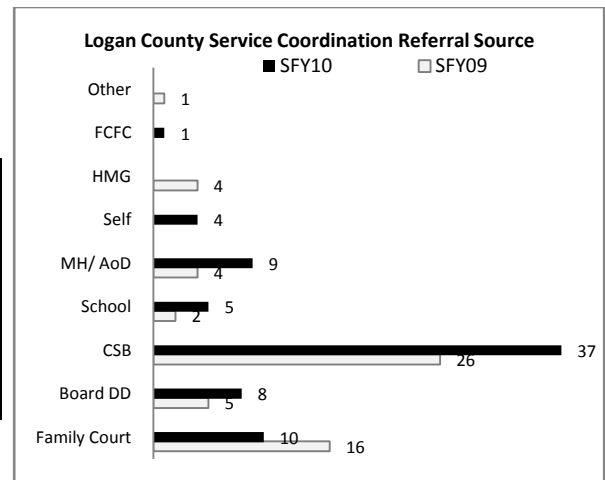
Logan Co Service Coordination Referrals



Referral Sources

Typically agencies working with families make referrals for Service Coordination, but anyone, including parents can make a referral for Service Coordination.

Referral Source	SFY09		SFY10	
	#	%	#	%
Children's Services	26	46%	37	50%
Family Court	16	27%	10	14%
Board of Developmental Disabilities	5	9%	8	11%
Mental Health Provider	4	7%	8	11%
Bellefontaine Schools-Care Team	2	3%	5	7%
Self Referral	1	2%	5	7%
Help Me Grow	4	6%	0	

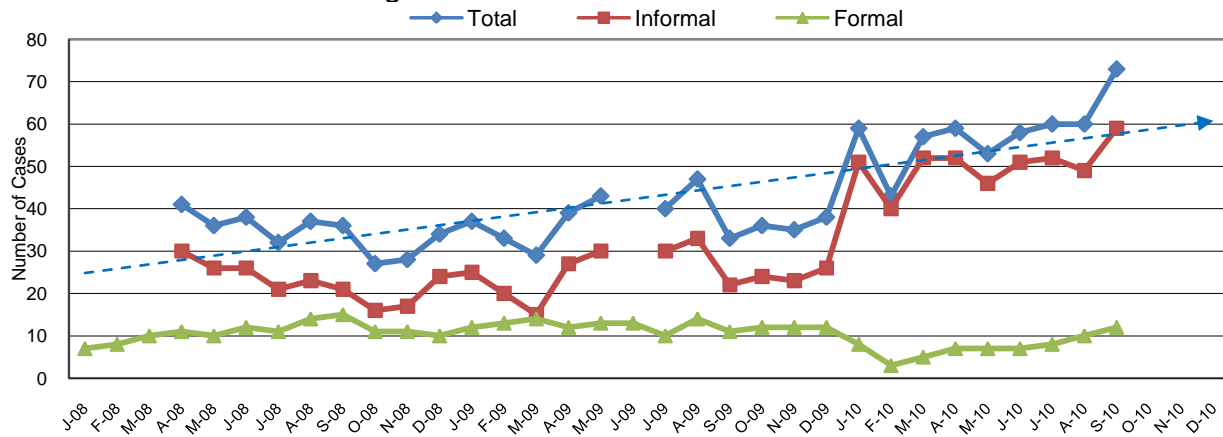


Children Served

Triage tracks how many children are served each month. The majority of cases are Informal teams facilitated by an agency worker. In SFY 10 a total of 104 different children were open with Service Coordination Teams.

	SFY09	SFY10
# Served SFY10		104
# Closed SFY10		46
Monthly average-all	34	47
Monthly average Consults	3	1
Monthly average Informal CFT	22	38
Monthly average Formal CFT	12	9

Logan Co Service Coordination Cases Served

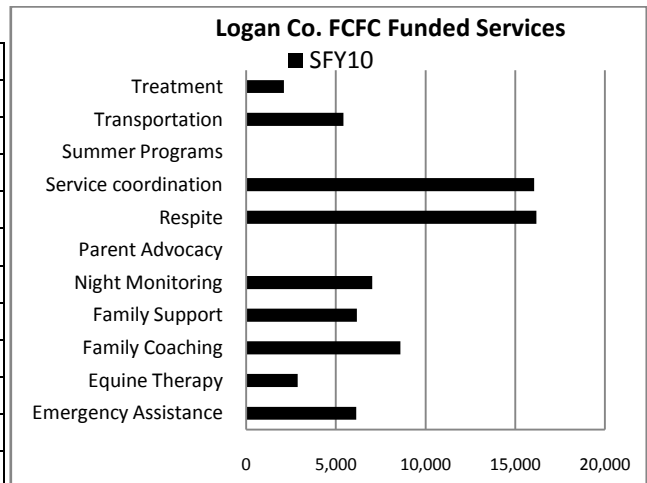


Funding

When a case is open for Service Coordination, the team facilitator is able to make requests for funding. Funding is provided through State/Federal Family Centered Support Services (FCSS) and Local pooled funds. Triage reviews and approves/denies each request for funding.

Services Provided	SFY08	SFY09	SFY10
Emergency Assistance	9,673	2,077	6,133
Equine Therapy			2,870
Family Coaching	6,438	713	8,608
Family Support	3,935	16,373*	6,170
Mentoring	57	30	
Night Monitoring			7,038
Respite	14,934	21,748	16,176
Service Coordination	5,335	3,315	16,056
Summer Camps	500		
Transportation	3,433	875	5,430
Treatment Services	5,941		2,100
TOTAL:	45,004	48,941	70,714

*Includes Emergency Assistance, equine therapy, and family coaching.



FOR MORE INFORMATION ABOUT LOGAN COUNTY FCFC SERVICE COORDINATION

- CONTACT** **Angie Hackley, LISW**
Program Coordinator
Logan County FCFC
 Phone: 937-592-7287
 Email: ahackley@loganbdd.org

- WEBSITE** <http://logancountyfcfc.com/service-coordination/>